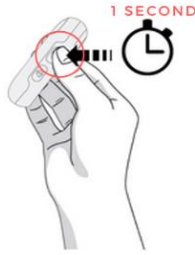


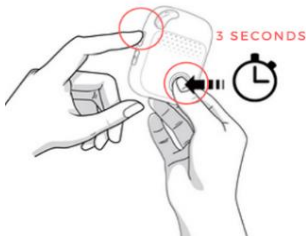
SMART HELP (CS-EV04) Quick Start Guide



Switching on and off device

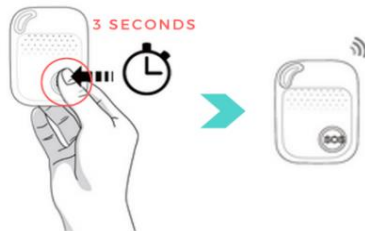


To turn on the device: press the side call button for 1 second, all the LEDs will flash rapidly. Device can also be turned on automatically by charging via a magnetic USB cable or put it into the docking station.



To turn off the device: press and hold the side button and SOS button together for 3 seconds until the LEDs off.

Activating an SOS Alarm



When you need help, **press the SOS button Down for 3-4 seconds** till you hear a voice prompt of activating an SOS alarm. This starts the sequence of “help me!” text message send to your emergency contact numbers followed by the outgoing call to the monitoring station.

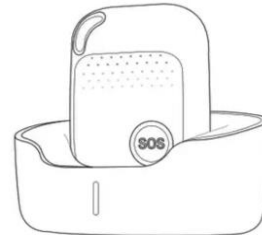
Fall down alarm



- When device detects a fall, it will automatically notify your emergency contacts and call the monitoring station.
- Due to the daily life activities, device may detect a fall incorrectly, this situation may cause a false alarm. However, users can manually cancel the fall alert by pressing SOS button during its beeping.

·Very Important: Although the system can detect most falls, there is still a chance that some falls may not be detected. We strongly recommend that users press the SOS button in an emergency situation.

Charging your device



- Place device on the charging base. Connect the USB cable from the charging base to the AC adaptor.
- The power indicator (red light) should blink when charging and solid when fully charged.

Operation by SMS

Each unit is assigned a unique phone number. Users can send SMS commands to track location updates and access additional information directly via text messages.

Request Location

Command: **LOC**

Device will provide a link. Press the link then the location will be shown on your mobile phone.

Speaker Volume

Command: **SPEAKERVOLUME<LEVEL>**

For example, enter **Speakervolume90** to set speaker volume at 90%. Default is 80%.

Reboot Smart Help

Command: **REBOOT**

Device will be turned off and restarted automatically.

Turning Fall Detection On/Off

Command: **FL0(off), FL1(on)**

The fall detection function will be turned off/on.

Find My Device

Command: **FINDME**

Device will play voice prompt “I am here” and last for 30 seconds, the finder can cancel the voice prompt by pressing the SOS button when device is found.

Turn Off Device Remotely

Command: **OFF**

Once device receives this command, the device will be turned off automatically.

Columbia Security Systems & Surveillance

Tel: 604-568-3863 Email: service@columbiasecurity.ca